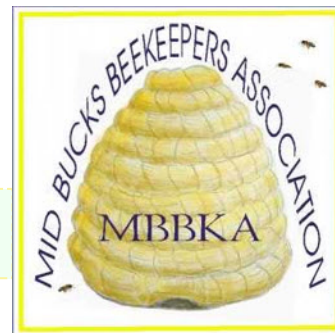


Mid Bucks Beekeepers Association

Newsletter for August 2011



Honey Shows coming up

There are two important honey shows coming up soon; [Bucks County Beekeepers](#) in September and [Mid Bucks](#) in October. Now is a good time to start preparing for them.

On **Saturday 24th September** the [Bucks County Beekeepers Association](#) Honey Show will be held at the Memorial Hall in Wendover. This is open to members of all four associations in Bucks and we are fortunate that it is right on our doorstep in Wendover. It will be an excellent opportunity to show that we in Mid Bucks can produce honey and hive products that are every bit as good as our sister organisations at Chalfonts, High Wycombe and North Bucks.

If you are new to beekeeping there are two one jar of liquid honey that is judged by taste about it being crystal clear but do strain it to other class is number 13 which is for of beekeeping. You only need to submit one will be judged on quality and presentation.



classes you might like to enter. Class 6 is for and aroma only. You don't need to worry remove bits of bees and lumps of wax. The members who are in their first or second year jar of honey which may be liquid or set but it

It is not very difficult to enter the main matching jars of liquid or set honey. There are separate classes for light, medium and dark honey. If you are unsure which is the correct class for your honey, enter into the medium class; the honey show secretary has a set of grading glasses which you can borrow on the morning of the show and change to a different class if you think that is right.

Entrance is free. The full schedule and entry form is given on pages 3 and 4 of this newsletter.

Our winter season starts on 21st September with a talk by [Margaret Holland](#) on preparing for winter. Margaret was our Seasonal Bee Inspector for a few years and has talked to us before. Her talk will be interesting to both new and experienced beekeepers.

In November, [Ron Hoskins](#) - the "[Swindon Bee](#)" man will coming to Mid Bucks. This is a great scoop and congratulations to Karen for arranging it. More details will be given later.

Coming Events

Thursday 1st September

Bucks County Show

Weedon Hill, Aylesbury
10:00 am - 5:00 pm

Wednesday 21st September

Preparing for Winter

Margaret Holland
7:30 pm in the Bowls Club

This is the first meeting in our 2011/2012 Winter Season

Saturday 24th September

Bucks County Beekeepers Honey Show

Memorial Hall, Wendover
10:00 am - 1:00 pm
(See page 3 for schedule)

Wednesday 19th October

AGM and Honey Show

Wednesday 16th November

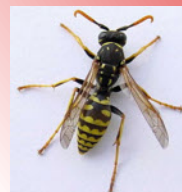
Ron Hoskins

(details to be announced later)

Wasps

So far it does not seem to be too bad a year for wasps but it is essential that precautions are taken now to prevent them getting into hives. Entrances must be reduced to make it easier for the bees to defend the colony.

If you have a weak colony, you can cut the opening down to less than half an inch so that only one or two insects at a time can enter.



WBC users should check carefully that the lifts fit properly and have no gaps where wasps can get in.

Also, don't forget to put up wasp traps around the outside of the apiary.

Basic Assessment 2011

This year 8 people from MBBKA took the BBKA Basic Assessment and **all passed!**



Congratulations

Apiguard for Sale

Scott Rutland has supplies of Apiguard for sale. The costs is £18 per box of 10 trays (treats 5 hives).

Contact Scott on [07748788241](tel:07748788241) or email scottrutland@talktalk.net.

More overpage ...

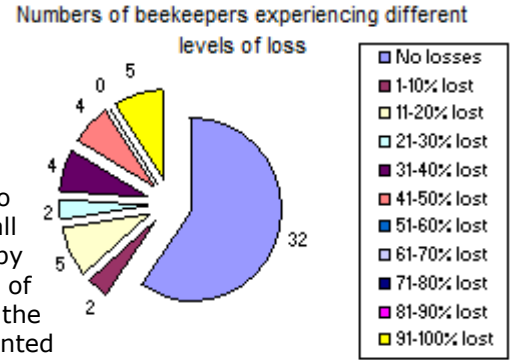


Winter Losses Survey 2011 - update

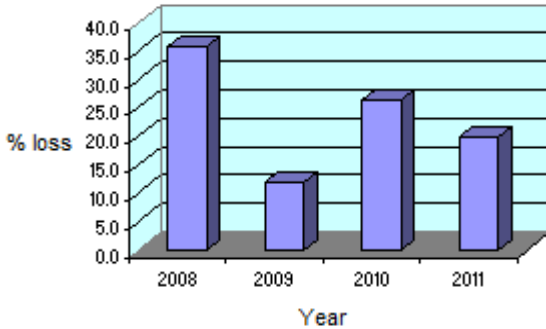
We have now had **54** responses to the Colony Losses Survey this year and the figures are slightly worse than the ones published in the May newsletter.

Out of a total of **207** colonies in November 2010, **166** survived queenright on 15th April 2011. **41** colonies were lost, **19.8%** of the total. Overall nearly **1 in 5** colonies were lost.

The chart on the right shows the numbers of beekeepers who experienced different levels of loss



Overall losses by year from 2008-2011



The majority lost no colonies and the overall figures were dominated by a small number of beekeepers. **50%** of the overall losses were accounted for by just **5** respondents.

On the left is a comparison of overall losses from 2008-2011

It is beginning to appear that 2009, with just 11% loss, is turning out to be one of our better years.

Whatever the reasons, the key to colonies surviving the winter must be in good autumn preparation:- strong colonies, well fed and disease free.



What the well-dressed beekeeper is wearing this year

Bucks County Show - Thursday 1st September

Last year we put on a very successful display at the [Bucks County Show](#) and this year we have been invited back.

We shall again be in the "Home and Garden" marquee where the fruit, flowers and vegetables are exhibited and judged. Public access will be from about 10:30 onwards.

A number of people have volunteered to help on the stand but we still need **more help**. Please come along and spend an hour or two with us if you can.

EFB in the area

There have been two outbreaks of European Foul Brood recently just outside the Mid Bucks area. Our members living near the outbreaks were inspected and thankfully were clear of the disease.

The Bee Inspectors were able to contact these members because they were registered on **BeeBase** which is the government register of beekeepers in England, Scotland and Wales.

Registration is voluntary and is free and we strongly urge all our members to register their colonies.

It is very much in our own interests to do so because then we get alerts and free inspections if disease is found close by.

You can register online at:

<https://secure.fera.defra.gov.uk/beebase/public/register.cfm>

I am looking forward to getting together with you all at our first meeting on 21st September and comparing notes on the season. My honey yield has been very much less than last year and I suspect I am not alone in this.

Frank Rickett, Chairman Tel: 01494 866516

Email: chairman@mbbka.org.uk





BUCKS COUNTY BEEKEEPERS' ASSOCIATION

Registered Charity No. 297335

Honey Show 2011

To be held at the Wendover Memorial Hall, Wharf Road, Wendover, HP22 6HF

On **Saturday 24th September 2011**

Judging will start at 10:00 am. All exhibits must be in place by 9:45 am.

Judge: Vivienne Brown

Honey Show Secretary – Beulah Cullen 01895 234704

TROPHIES to be awarded

- Tweedie Silver Skep:** to the BCBKA branch whose members gather most points in the show.
- Peggy Cup:** for the BCBKA member gaining the most points overall.
- Margery Parker Trophy:** for the best honey cake in class 14.
- John Raven Award:** for the best honey exhibit in classes 1 to 5.

SCHEDULE of CLASSES

1. Two 1lb jars of light honey.
2. Two 1lb jars of medium honey.
3. Two 1lb jars of dark honey.
4. Two 1lb jars of naturally crystallized (not stirred) honey.
5. Two 1lb jars of soft-set honey.
6. One jar of liquid honey judged solely on taste and aroma (to be shown in a transparent 1lb jar).
7. One frame of capped honey for extraction (may be granulated).
8. One carton of (unwired) cut comb to be judged by appearance only.
9. One bottle sweet mead.
10. One bottle dry mead.
11. One cake of beeswax 200-255g (7oz – 9oz).
12. Two matching beeswax candles in holders. To be lit by the judge.
13. Beginners class: One 1lb jar of honey.
14. One honey cake – see recipe below.

Recipe for honey cake – class 14.

Ingredients: 5 oz butter, 6 oz exhibitors own honey, 4 oz soft brown sugar, 2 eggs, 7 oz self raising flour, 1 tablespoon water or milk.

Method: Place butter, sugar, honey and water into a saucepan and heat until the fat has melted, stirring all the time.

Remove pan from heat and allow contents to cool to blood temperature. Gradually beat in the eggs. Add sieved flour and mix until smooth.

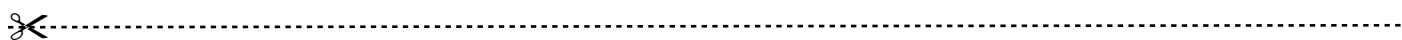
Pour mixture into a greased and lined 7" (180mm) cake tin and bake for about 1 hour until risen and firm to the touch. As a guide, oven temp. 350°F/Mark 4/180°C

BUCKS COUNTY BEEKEEPERS' ASSOCIATION

Honey Show Rules 2011

Failure to follow these rules may disqualify the entry or points may be deducted

1. All exhibits in classes 1-14 shall include or be the produce of the entrant's own hives.
2. An exhibitor may make multiple entries in each class but may receive only one award for that class.
3. Honey is to be exhibited in traditional 454g (1lb) BS 1777 squat jars with metal lacquered screw lids and flow-in seals. For classes 1,2 and 3, BS 1656 filters will be used to determine the colour of honey (available for use on day of show).
4. Where two jars of honey are required, they should be matching in colour and consistency.
5. Class 7: Each frame must be submitted in an undecorated bee-proof showcase. The full comb must be visible from both sides and the frame capable of being lifted out of the case.
6. Class 8: Cut comb is to be exhibited in standard 8oz rectangular containers with transparent lids.
7. Class 11: Beeswax may be exhibited either polished or unpolished, in a suitable container with a transparent lid or on a plate in an unsealed plastic bag.
8. Class 12: Candles may be rolled, dipped or moulded. Candles must be displayed in stable candleholders.
9. Mead must be in clear colourless bottles without fluting or any decoration. The bottle should be between 20-30 fl oz (591-887 ml) and filled to within 1" (25.4 mm) of the bottom of a cork stopper with white plastic flange.
10. Class 13: a "Beginner" will in be their first or second year of beekeeping.
11. Class 14: Cake to be displayed in a plastic bag which can be removed for judging.
12. Labels for each exhibit will be provided by the show secretary immediately prior to the show and should be placed on each exhibit as follows:-
 - Jars (honey/mead) - label to be placed horizontally half an inch (12mm) up from base of jar
 - Frame - label to be placed on top of frame and one on showcase, top right hand corner
 - Cut Comb - label to be placed at top right hand corner of lid and one on side of the container
 - Wax - label to be placed on plastic bag or container or on base of block
 - Cake - label to be placed on plastic bag and one on plate
 - Candle - label to be placed on card in front of exhibit



Honey Show Entry Form 2011

To enter, please complete the entry form below and forward to the honey show secretary, [Beulah Cullen, 26 Sweetcroft Lane, Hillingdon, UB10 9LD](mailto:beulah.cullen@virgin.net), or e-mail: beulah.cullen@virgin.net
Entries to arrive **no later than Wednesday 21st September**. There is no charge for class entries.

1	2	3	4	5	6	7
8	9	10	11	12	13	14

Mr / Mrs	
Address	
Association	
Tel. Number	