

Mid Bucks Beekeepers Association

Newsletter for August 2010

August and September are important months for beekeepers. This is the time when colonies are prepared for the winter and there is no doubt that good preparation can reduce winter losses.

Last winter, one in four colonies was lost in the Mid-Bucks area. A recurring theme was bees starving because they were unable to reach their food stores. This can easily happen with small colonies during a long spell of cold weather. The cluster gets very tight in order to conserve heat and consumes everything within reach.

The best way to prevent this from happening is to go into the winter with strong colonies containing large numbers of healthy worker bees.

Three questions we should ask ourselves about each colony

- ⇒ Are the bees strong enough to survive the winter?
- ⇒ Have they got enough food?
- ⇒ Are they disease free?

If a colony is weak it may be best to unite it with another colony. Check first that the weakness is not caused by any obvious signs of disease.

The other important thing to consider now is varroa control. It is important to start this in August because the bees that are developing now will be the ones that will carry the colony through the winter. You want these to be as healthy as possible.



Summer Events

Thursday 26th August Bucks County Show

Weedon Hill: on the A413, Buckingham Road,
3 miles North of Aylesbury

This year Mid Bucks Beekeepers will put on a demonstration of bees, beekeeping and hive products in the "Home and Garden" marquee. Please come and visit us.

Saturday 11th September

Wendover CE Junior School and
The John Hampden School
Wharf Road, Wendover

Opening of the new Wildlife Meadow by Chris Packham- BBC co-presenter of Springwatch
12 pm - 3 pm

Wednesday 15th September

"My Approach to Bee Improvement"
By

Roger Patterson

7:30 pm at the Bowls Club.

This will be the first meeting in our 2010/2011
Winter Season

Using Apiguard

Apiguard should be applied as soon as your honey has been harvested.

You will need two trays for each hive.

When you have taken off all the frames you are going to extract, remove the cover board, any remaining supers and the queen excluder.

Place one opened tray directly on top of the brood frames. Put an eke or empty super over it and then replace the queen excluder, super, cover board and roof.



If you are using an open-mesh floor insert the monitoring sheet underneath the mesh so as to cut down ventilation through the floor.

After two weeks, replace the Apiguard tray with a fresh one and leave that in place for another 2-4 weeks or until the bees have emptied it.

There are different opinions as to whether you can feed sugar syrup whilst the trays are in the hive. Personally I wait until the Apiguard treatment is finished before feeding. However, if you have taken off most of the honey then you may need to feed sooner because there is very little forage around now.

More overpage



Red-tailed Bumble Bee Mating

This remarkable picture of the Red-tailed Bumblebee, *Bombus lapidarius*, was taken by a lady in Swanbourne.

Unlike honey bees, bumble bees mate close to the ground and at this time of the year new queens are mating prior to hibernating over the winter.

It is a sight rarely seen, even rarer to be able to get such a superb photograph of the event.

Notice how the drone is substantially smaller than the queen. It has the characteristic red abdomen but also the bright yellow hairs on the head and thorax.

Many thanks to Marian Lowe for permission to reproduce this picture and to Betsy Duncan-Smith for forwarding it me.

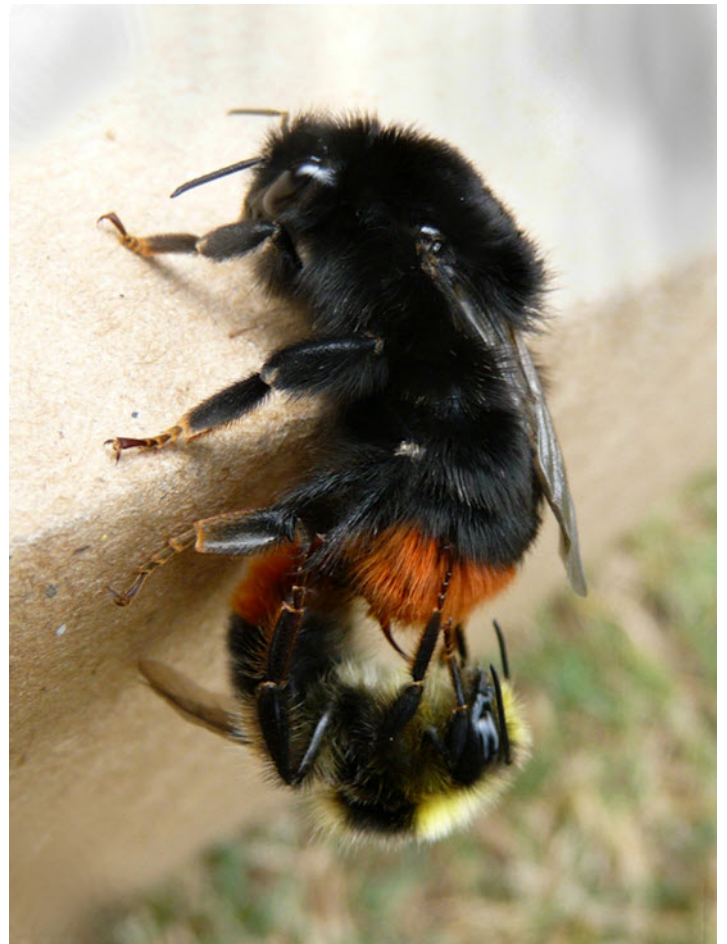


Photo: Marion Lowe

Training Sessions for New Beekeepers

During the summer we have held a total of 15 training sessions on Wednesday and Thursday evenings at the Association Apiary.

All sessions have been well attended and we have received a lot of very positive feedback from our new beekeepers.

I would like to thank all of our experienced beekeepers who came along to help with the training and, in particular, to Sean Stephenson for organising the apiary and John Dadswell for maintaining the lists of people attending.

Sean will be down at the apiary on [Wednesday 25th August](#) and [Wednesday 1st September](#) at [6:00 pm](#). Everyone is welcome to come along, there is no need to book but, if you don't have your own bee suit come early because our stock is limited.

AGM 2010

This year's AGM and Honey Show will be held on [Wednesday 20th October](#) at 7:30 pm in the Bowls Club.

Nominations for the committee and resolutions to be put to the AGM must be sent to the Association Secretary no later than [29th September](#).

A nomination form and resolution form are provided at the end of this newsletter.

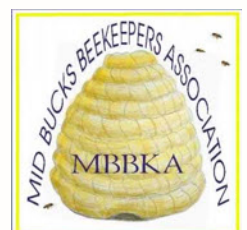
There are vacancies on the committee this year so if you would like to help with running the Association please put your name forward.

Winter Programme 2010 - 2011

The Winter Programme starts in the Bowls Club on Wednesday 15th September at 7:30 pm with the talk by Roger Patterson.

The full programme card will be completed shortly and will be circulated to all members.

Frank Rickett, Chairman
Tel: 01494 866516
Email: chairman@mbbka.org.uk



Mid Bucks Beekeepers Association

Nomination Form for Officer/Committee Member 2010/11

I,being a fully paid up member of the MBBKA, (name in full)
hereby nominate

.....for the position of (name in full)

.....in the MBBKA.

Signature of proposer.....

Signature of seconder.....

I agree to the nomination

(Signature of nominee)

Completed form to be returned to the Secretary by **29th September** to:
Jean Savigar, 138 London Road, Aston Clinton, Buckinghamshire, HP22 5LB

Mid Bucks Beekeepers Association

Notice of motion to be put before AGM on 20th October 2010

We/I,&.....
(name in full) (name in full)

being fully paid up members of the MBBKA, hereby propose the following resolution be adopted by the Annual General Meeting

.....
.....
.....

Signature of proposer.....

Signature of seconder.....

Completed form to be returned to the Secretary by **29th September** to:
Jean Savigar, 138 London Road, Aston Clinton, Buckinghamshire, HP22 5LB